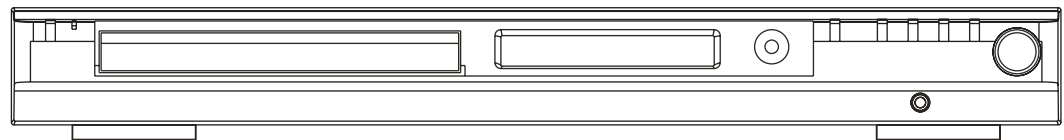


# INSIGNIA

Model : IS-HTIB101071

## DVD Home Theatre System

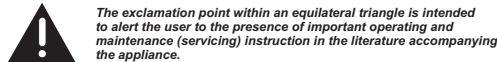


## Instruction Manual

### SAFETY



The lightning flash with arrowhead symbol, within an equilateral triangle, is intended to alert user to the presence of uninsulated "dangerous voltage" within the product's enclosure that may be of sufficient magnitude to constitute a risk of electric shock.



The exclamation point within an equilateral triangle is intended to alert the user to the presence of important operating and maintenance (servicing) instruction in the literature accompanying the appliance.

#### WARNINGS:

To reduce the risk of fire or electric shock, do not expose this appliance to rain or moisture.

**DO NOT REMOVE COVER OR OPEN THE CABINET.** Dangerous high voltages are present inside the enclosure. No user serviceable parts inside. Refer servicing to qualified personnel only. Use of controls or adjustments or performance of procedures other than those specified may result in hazardous radiation exposure.

#### LASER:

**CLASS 1 LASER PRODUCT**

Type: Dual semiconductor laser GaAlAs  
Wavelength: 650nm and 780nm  
Output Power: 7mW  
Beam Divergence: 60 degree



**INVISIBLE LASER RADIATION WHEN OPEN OR INTERLOCK FAILED OR DEFEATED.**

#### WARNINGS:

**DO NOT STARE INTO BEAM.** Avoid direct exposure to laser beam. To prevent direct exposure to laser beam, do not try to open the enclosure.

To ensure proper use of this product, please read this owner manual carefully and retain for future reference. Should the unit require maintenance, contact an authorized service location.

### IMPORTANT SAFETY INSTRUCTIONS

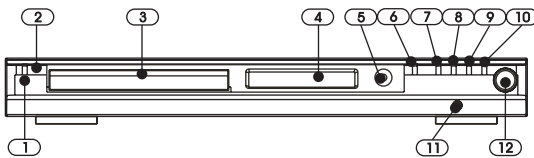
#### CAUTION: RETAIN THIS MANUAL FOR FUTURE REFERENCE.

This set has been designed and manufactured to assure personal safety. Improper use can result in electric shock or fire hazard. The safeguards incorporated in this unit will protect you if you observe the following procedures for installation, use and servicing. This unit does not contain any parts that can be repaired by the user.

- Read these instructions.
- Keep these instructions.
- Heed all warnings.
- Follow all instructions.
- Do not use this apparatus near water.
- Clean only with dry cloth.
- Do not block any ventilation openings. Install in accordance with the manufacturer's instructions.
- Do not install near any heat sources such as radiators, heat registers, stoves, or other apparatus (including amplifiers) that produce heat.
- Do not defeat the safety purpose of the polarized or grounding-type plug. A polarized plug has two blades, one wider than the other. A grounding type plug has two blades and a third grounding prong. The wide blade or the third prong is provided for your safety. If the provided plug does not fit into your outlet, consult an electrician for replacement of the obsolete outlet.
- Protect the power cord from being walked on or pinched particularly at plugs, convenience receptacles and the point where they exit from the apparatus.
- Only use attachments/accessories specified by the manufacturer.
- Unplug this apparatus during lightning storms or when unused for long periods of time.
- Use only with a cart, stand, tripod, bracket or table specified by the manufacturer, or sold with the apparatus. When a cart is used, use caution when moving the cart/apparatus combination to avoid injury from tip-over.



### FRONT PANEL



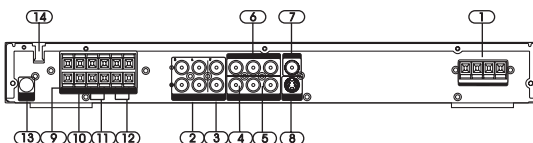
- Standby On / Off
- Standby Indicator: Power Off Mode - No Light; Standby Mode - Red Led
- Disc Tray
- VFD Display Area
- Infra-Red Receiver Window
- ▲ / ■ 1) Opens or closes the disc loading tray in stop or no disc mode, 2) Stops playing.
- ◀▶ SKIP 1) skips to previous chapter/track in DVD/VCD/CD mode, 2) tunes down frequency in tuner mode.
- ▶▶ SKIP 1) skips to next chapter/track in DVD/VCD/CD mode, 2) tunes up frequency in tuner mode.
- ▶ 1) Starts playing in DVD/VCD/CD mode, 2) Saves preset channel word in tuner mode.
- FUNC. Switches between AV mode, tuner mode and DVD mode.
- Headphone Jack
- VOLUME Adjusts the master volume. Turn clockwise to increase the volume and anti-clockwise to decrease

### PACKING

Examine the contents of the box for your DVD Receiver.

- There should be the following:
- DVD Receiver with attached power cord
  - Remote Control with 2 batteries
  - Instruction Book
  - AV cable
  - Subwoofer
  - 2 front speakers
  - Center speaker
  - 2 rear speakers
  - AM loop antenna and FM antenna

### REAR PANEL



#### IMPORTANT!

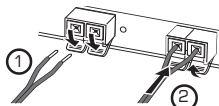
Connect the AC cord only after the speakers, antenna and all optional equipment have been connected. Never make or change any connections with the power switched on. The rating plate is located at the rear panel of the system.

#### 1. FM Antenna Input Connections

For FM reception, connect the FM antenna to the FM jack. Move the antenna in various directions until the clearest signal is received.

#### AM Loop Antenna Connections

For AM reception, connect the AM loop antenna to the AM jack. Position the loop antenna to receive the clearest sound.



Fully insert the stripped portion of the antenna into the terminal as shown above. Note: Position the antenna as far away as possible from a TV, VCR or other radiation source.

#### 2. Audio Inputs

For connecting audio (Left / Right) input signals from auxiliary sources such as VCR, TV or Satellite Receiver and playing them through this Home Theater System. These connections are labelled AUX1 and AUX2 and are selected by the FUNC. button on the front panel.

#### 3. Video Inputs

For connecting video signals from the corresponding video out jacks on the auxiliary items, e.g. TV, VCR or satellite receiver.

#### 4. Video Output - VCR

For connecting VCR or other recording device (Most DVDs cannot be recorded, however you can use this connection to record from the auxiliary inputs, e.g. satellite receiver, as well).

#### 5. Audio Outputs - VCR

For connecting audio (Left / Right) signals to external recording devices such as VCR or Tape Recorder.

#### 6. Component Video & Progressive Outputs

For connecting TV with component video input (using component video cable, not provided).

#### 7. Digital Coaxial Output

For connecting external equipment that has digital audio input jack, such as a CD recorder.

#### 8. S-Video Output

For connecting the S-VIDEO IN jack on the TV using an optional S-Video cable. This type of connection will provide superior picture quality. However, your TV must be equipped with an S-Video input socket.

#### 9. Subwoofer Speaker

For connecting the passive subwoofer, with colored wire to "+" terminal and black wire to "-" terminal.

#### 10. Center Speaker

For connecting the center speaker, with colored wire to "+" terminal and black wire to "-" terminal.

#### 11. Surround Speaker (Rear Speakers)

For connecting the left surround speaker to "SL" terminals and right surround speaker to "SR" terminals. Connect the colored wire to "+" and black wire to "-".

#### 12. Front Speaker

For connecting the left front speaker to "L" terminals, right front speaker to "R" terminals. Connect the colored wire to "+" and black wire to "-".

#### 13. Active Subwoofer Out

For connecting an external powered subwoofer.

#### 14. Power Cord

### PLAYER ZONES

For the purpose of distribution of DVD Discs, the world has been separated into 6 zones. The zone your unit is intended for is indicated on the Zone Label. This should be the same as the label on discs available in your region. If you have any difficulties in playing a disc, make sure that the disc is for the same zone as your player.

### SETUP AND INSTALLATION

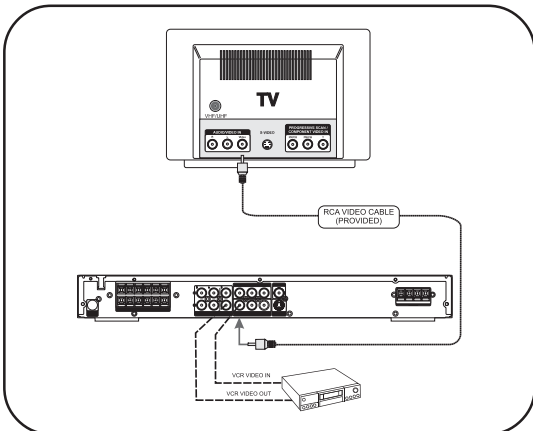
The following setup and installation diagrams show the different video and audio connections to TV, VCR or CD Recorder.

Important: Make sure the AC Voltage matches your local voltage.

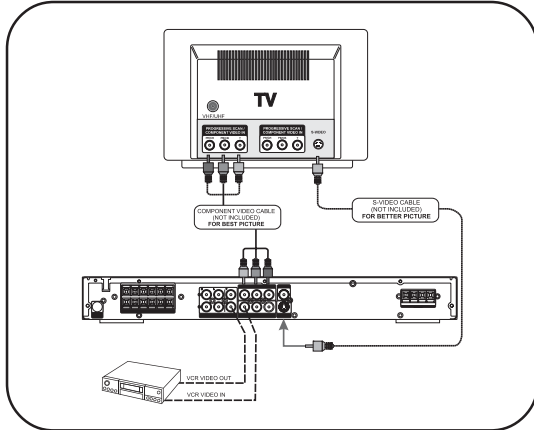
Connect the AC cord only after the speakers, antennas, and all optional equipment have been connected.

#### (1) Video Connections

For good picture quality, use RCA VIDEO CABLE

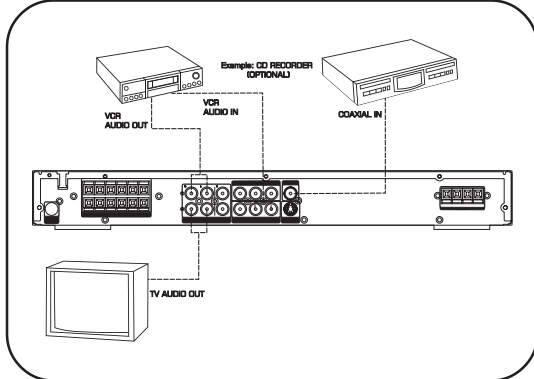


For better picture quality, use S-VIDEO CABLE (not included). For best picture quality, use COMPONENT VIDEO CABLE (not included)



NOTE: When in AV1 or AV2 mode, only composite video sources will have video output signal, therefore, connect only RCA video output or TV Out to your TV sets.

#### (2) Audio Connections

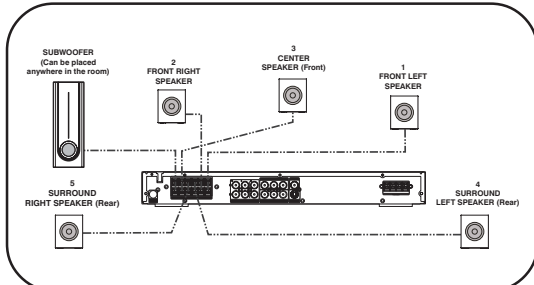


#### (3) Speaker connections

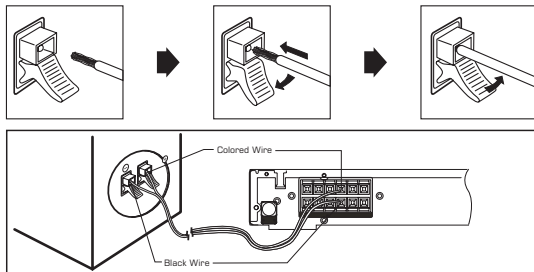
Before Connecting

This DVD Receiver is designed to reproduce optimum sound quality when the supplied speakers are used. If you wish to connect other speakers to the system instead of the supplied speakers, they should be 4 ohms impedance.

Maintain correct polarity when connecting speakers (colored wire for positive and black wire for negative). To prevent damage to circuits, never short-circuit the positive and negative speaker output terminals.



Press the button down & insert the wire, then release the button.



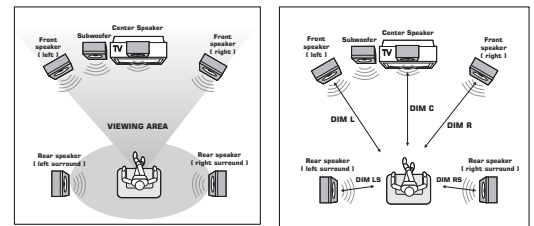
Connection of all speakers is the same.

#### Notes

- Do not remove excessive amount of insulation on the wire cords, to prevent the stripped portions from touching each other. The optimal length for the stripped part should be around 1/3 inch (or 1cm).
- Do not push the stripped part too far into the speaker connectors.

### SPEAKER PLACEMENT

Placement of speakers play an important role in the reproduction of surround sound. Particular attention should be taken when designing the speaker layout. For the best surround effects, all speakers should be installed.



A typical room layout will have the left, center, and right speakers placed across the front and the left surround and right surround speakers placed along the sides towards the rear as shown in the above left picture. The center speaker can be positioned above or below the video screen or TV. A subwoofer can be installed for powerful bass sounds and can be positioned anywhere in the room. The 'speaker to listener dimensions' shown in the above right picture is used for proper setup of the surround system

#### NOTE:

- Do not connect more than one speaker to any one pair of +/- speaker terminals.
- Do not connect speakers with an impedance lower than the speakers supplied.

### INSTALLATION

- Install your unit on a stable flat surface. There must be sufficient room in front of the unit for the drawer to be opened and the unit should be positioned so that it can see the remote control.
- Do not expose your unit to extremes of temperature or humidity.
- Avoid standing it on a hot surface such as on top of other hot running equipment and ensure that there is adequate ventilation to the unit.

#### Caution:

Do not install this equipment in confined space such as a book case or similar unit!

#### Cleaning Disc

Picture freezing & sound skipping or repeating can occur if the disc inside the player is dirty.

- When a disc becomes dirty, clean it with a cleaning cloth. Wipe the disc from the center out.
- Do not wipe in a circular motion. Circular scratches can cause picture distortion or render the disc unplayable.

#### Caution:

Do not use solvents, commercially available cleaners, or antistatic spray intended for analog discs.

### SWITCH ON FOR THE FIRST TIME

- You have connected up the Home Theater System as shown in the preceding pages.
- Connect Power to the DVD Player.
- The DVD Player should have the Standby Light illuminated.
- Press the Power on key (either on the panel or the remote control); the player will be in AV 1 mode.
- Press DVD on the remote control; the DVD Player will switch on in DVD mode. After a few seconds the panel will show "NO DISC".
- Switch on your TV and select the AV input that the DVD Player is connected to. You should see the DVD Screen and a message "Insert a disc".
- Press the open key (on the panel or the remote control). The drawer will open. Place a DVD in the drawer, and press close (same as open). The player will read the disc and start playing it. Before the movie starts to play, a menu will be shown. You will need to select "PLAY MOVIE" and press [OK] before the movie will start.
- Although you can watch a movie immediately, to get the best results from your Home Theater, you should now press "STOP" and proceed to do the system setup options on the next page. This will set up all the functions on your theater. You only need to do this when you first install your Home Theater.
- If you choose to watch the movie you can find out about DVD options and navigation of the DVD disc in the section "Playing a DVD disc" and onward.

### PROBLEMS

If it appears that your DVD-Video player is faulty, first consult this checklist. It may be that something simple has been overlooked.

Under no circumstances should you try to repair the player yourself, as this will invalidate the warranty. Only qualified service personnel can remove the cover or service this player.

\* When the unit is switched on the first time, S-Video will be the default video output. Press the V-SELECT button to select the correct output modes. Your current output mode will show on the VFD.

#### NO POWER

- Check if the on/off button on the front of the player is set to on.
- Check if the power cord plug is properly connected.
- Check if there is power at the AC outlet by plugging in another appliance.

#### NO PICTURE

- Check if the TV is switched on.
- Select the correct AV input on the TV.
- Check the video connection.
- Check if channel selector is set to AV on the TV. (See your TV manual for instructions).
- When Progressive Scan is on, composite video output is disabled. Press the V-SELECT button to select the correct video output mode. Otherwise no picture or distorted picture will be found.

#### DISTORTED PICTURE

- Check the disc for fingerprints and clean with soft cloth, wiping from center to edge.
- Sometimes a small amount of picture distortion may appear. This is not a malfunction.
- The disc format does not match the TV-set used (PAL/NTSC).
- Ensure that ONLY one video output is connected.

#### NO COLOR IN PICTURE

- The disc format is not the same as that of the TV-set used (PAL/NTSC).
- Ensure DVD player is not connected through VCR.

#### PICTURE SWING

- Relocate the unit further away from possible interference or emission sources (e.g. Radio, Power Amplifier, radiator etc.).

#### NO RETURN TO START-UP SCREEN WHEN DISC IS LOADED

- Check to see if the program requires another disc to be loaded.
- Reset by unplugging the player from the power, then connect the power again.

#### THE PLAYER DOES NOT RESPOND TO THE REMOTE CONTROL

- Aim the remote control directly at the sensor on the front of the player.
- Avoid all obstacles which may interfere with the signal path.
- Inspect or replace the batteries.

#### NO SOUND

- Check audio connections.
- If using a Hi-Fi amplifier, try another sound source.
- Check that DTS digital out is selected in the Audio Menu if a DTS disc is played.
- Ensure there is a DTS decoder connected when selecting DTS.
- Clean the disc.
- Check if the disc is defective by trying another disc

#### NO AUDIO AT DIGITAL OUTPUT

- Check the digital connections
- Check the Digital Out menu to make sure that the digital output is correctly set.
- Check if the audio format of the selected audio language matches your unit capabilities.

#### DISC CANNOT BE PLAYED

- Ensure disc is placed properly into the disc tray.

#### YOU HAVE FORGOTTEN THE PASSWORD

- Under "NO DISC" condition, press Number Key 7, Number Key 6, Number Key 4, Number Key 1 and Number 8 on Remote Control in order.

#### FUNCTION DISTURBED

- The normal function of the product may be disturbed by external interference. Just reset the product (disconnecting and reconnecting the power cord might be required to resume normal operation).

This equipment has been tested and found to comply with the limits for a Class B digital device, pursuant to part 15 of the FCC Rules. These limits are designed to provide reasonable protection against harmful interference in a residential installation. This equipment generates, uses and can radiate radio frequency energy and, if not installed and used in accordance with the instructions, may cause harmful interference to radio communications. However, there is no guarantee that interference will not occur in a particular installation. If this equipment does cause harmful interference to radio or television reception, which can be determined by turning the equipment off and on, the user is encouraged to try to correct the interference by one or more of the following measures:

- Reorient or relocate the receiving antenna.
- Increase the separation between the equipment and receiver.
- Connect the equipment to a supply outlet different from that to which the receiver is connected.
- Consult the dealer or an experienced radio/TV technician for help.

Consumers should note that not all high definition television sets are fully compatible with this product and may cause artifacts to be displayed in the picture. In case of 525 or 625 progressive scan pictureproblems, it is recommended that the user switch the connection to the "standard definition" output. If there are questions regarding our TV set compatibility with this model 525p and 625p DVD player, please contact our customer service center.

#### NOTE:

- Do not connect more than one speaker to any one pair of +/- speaker terminals.
- Do not connect speakers with an impedance lower than the speakers supplied.

Manufactured under license from Dolby Laboratories. "Dolby", "Pro Logic" and the double-D symbol are trademarks of Dolby Laboratories.

### DISCS YOU CAN PLAY

While advances have been made to ensure that your disc player is compatible with the largest number of discs possible, it cannot be guaranteed that you will be able to play discs which might not be compliant with audio CD standards. In the case of writable and rewritable discs, compatibility with this player depends on the CD/DVD writer, the right software and the disc used.

#### DVD-Video

Digital video discs - 12 cm and 8 cm, single or double sided, single or dual layer. DVDs are high-density optical discs on which high quality picture and audio are recorded by means of digital signals.

#### DVD-R, DVD-RW, DVD+R, DVD+RW

Most DVD-R and DVD+R (one recording only), DVD-RW and DVD+RW discs (rewritable), depending on the DVD writer and disc used. Recordings using DVD-R and DVD-RW discs must be made in Video DVD mode. Recordings using DVD+RW discs must be made in accordance with the specifications for DVD+RW discs with a 4.7 GB capacity.

#### Video CD(VCD)

VCD stands for Video Compact Disc which contains video footage, still images, audio tracks and interactive menus.

#### Audio CDs

Audio CDs (8 and 12 cm).

#### CD-R & CD-RW

Most CD-R (one recording only) and CD-RW discs (rewritable). This player can play most CD-R discs. CD-Rs written during a multi-session recording can also be played, provided that the session has ended before the disc is played (depending on the write software). However, depending on the condition of the CD writer, computer and the disc used, you may find that not all discs will play successfully. When playing a CD-R disc, it is completely normal for the unit to take up to 20 seconds to recognize the disc before starting to play. If the disc is not recognized after a period of 20 seconds, remove the disc, and then insert it again.

- Irrespective of the actual recording capacity of the CD-R, do not use its full capacity.
- CD-Rs should be preferably used instead of CD-RWs (rewritable CDs) as, in certain cases, CD-RW playback may be faulty.
- Use reliable, good-quality CD writing software.
- Close all other applications on the computer to ensure reliable CD-R disc recording.

#### MP3 Files

CD-R and CD-RW discs containing audio files in MP3 format. As for CD-R MP3 discs, please follow all the recommendations for CD-R above, along with the comments below:

- Your MP3 files should be ISO 9660 or JOLIET format. ISO 9660 format and Joliet MP3 files are compatible with Microsoft's DOS and Windows, as well as with Apple Mac. These two formats are the most widely used.
- MP3 filenames should not exceed 12 characters, and should end with the ".MP3" extension. General name format: "Title.MP3". When composing your title ensure that you use 8 characters or less, have no spaces in the name, and avoid the use of special characters including (. , / , \ , = , +).
- Use a decompression transfer rate of at least 128kB/sec (kilobytes/second) when recording MP3 files. Sound quality with MP3 files basically depends on the rate of compression / decompression you choose. Obtaining audio CD quality sound requires an analog/digital sampling rate, that is converted to MP3 format, of at least 128kB/sec and up to 160kB/sec. Choosing higher rates, such as 192 kB/sec or more, will rarely produce better sound quality. Conversely, files with sampling rates below 128kB/sec will not play properly.
- Do not try recording copyright-protected MP3 files. "Secured" files are encrypted and code-protected to prevent illegal copying. You must not copy such files.

#### Important:

The above recommendations cannot be taken as a guarantee that the DVD player will play MP3 recordings, or as an assurance of sound quality. You should note that certain technologies and methods for MP3 file recording on CD-Rs prevent optimal playback of these files on your DVD player (i.e. degraded sound quality and even, in some cases, inability of the player to read the file).

#### WMA Files

CD-R and CD-RW files. Usable format similar to MP3 files; also see "MP3 Files" for reference.

#### JPEG files

CD-R and CD-RW with JPEG files. Certain JPEG files, including progressive JPEG files, cannot be read by this player.

#### MPEG 4 Files

CD-R and CD-RW disc containing video files in MPEG 4 format, with stereo audio output only.

As for CD-R MPEG 4 discs, please follow all the recommendations for CD-R above, along with the comments below:

- Your MPEG 4 files should be ISO format without QPEL.
- MPEG 4 filenames should not exceed 12 characters, and should end with the ".avi" extension. General name format: "Title.avi". When composing your title ensure that you use 8 characters or less, have no spaces in the name, and avoid the use of special characters including (. , / , \ , = , +).

#### Important:

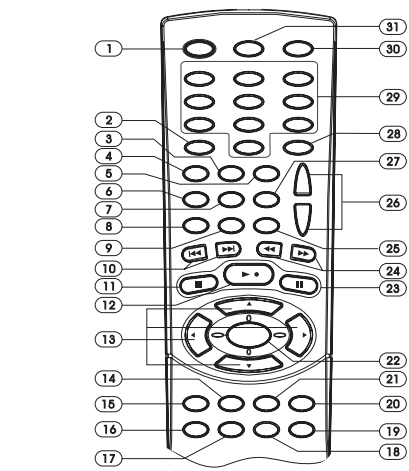
The above recommendations cannot be taken as a guarantee that the DVD player will play MPEG 4 recordings, or as an assurance of video quality. You should note that certain technologies and methods for MPEG 4 file recording on CD-Rs prevent optimal playback of these files on your DVD player (i.e. In some cases, inability of the player to read the file, or playback the file normally). Depending on the conditions of the recording equipment or the CD-R/RW, DVD-R/RW or DVD-R/RW disc itself, some discs can not be played on the unit.

This product incorporates copyright protection technology that is protected by method claims of certain U.S. patents and other intellectual property rights owned by Macrovision Corporation and other rights owners. Use of this copyright protection technology must be authorized by Macrovision Corporation, and is intended for home and other limited viewing uses only unless otherwise authorized by Macrovision Corporation. Reverse engineering or disassembly is prohibited.

U.S. Patent Nos. 4,631,603; 4,577,216; 4,819,098; 4,907,093; and 6,516,132



## REMOTE CONTROL



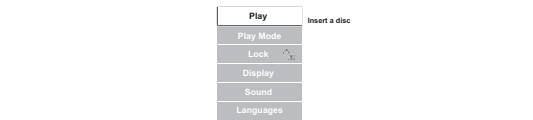
1. **ON/STANDBY** turns unit on/standby
2. **GOTO** display Time menu
3. **BOOKMARK** open bookmark menu of disc
4. **V-SELECT** toggles between progressive scan and switching different video output modes.
5. **SUBTITLE** display subtitle menu
6. **A-B** display the repeat A-B info menu
7. **PLAYMODE** display playmode menu
8. **ZOOM** selects zooming options when playing video disc by pressing repeatedly
9. **CLEAR** delete the last selection in program mode.
9. **ANGLE/PBC:** 1) Display Angle menu if present on discs 2) Display PBC menu if present on discs
10. **◀▶** skip backward/forward to the previous or next chapter/track.
11. **■** stops playing
12. **▶** starts playing.
13. **(Active Navigation keys)** advance in indicated directions for making selections in menus, Active Navigation mode and tuner settings.
14. **DVD** selects DVD/CD/VCD mode.
15. **AV SELECT** selects external AV inputs (press repeatedly).
16. **SURROUND** selects surround modes or soundfield modes.
17. **SLEEP** sets the sleep (auto-off) timer function.
18. **EQ** selects EQ modes.
19. **EXIT** exits menus and Active Navigation mode.
20. **MENU 1)** enters Disc Contents Menu in DVD mode, 2) enters System Setup for SPEAKER settings in all other modes.
21. **TUNER** selects Tuner mode, switches between AM and FM bands.
22. **OK 1)** enters or selects in menu and setup navigation, 2) in Tuner mode, enters preset programming mode or confirms a preset.
23. **II** freezes picture and sound during play
24. **◀▶** start reverse or forward search.
25. **TITLE (ROTATE)** 1) displays the Title Menu if present on disc (DVD mode only), 2) rotates pictures when playing Picture CDs.
26. **-VOL+** increases or decreases the volume.
27. **AUDIO/FM ST** selects Mono / Stereo in Tuner mode.
28. **INFO** enters or exits Active Navigation mode.
29. **0-9** (Numeric keys) used for direct selections of title, chapter, track, tuner channel and time search input in DVD mode.
30. **OPEN/CLOSE** opens or closes the disc tray.
31. **MUTE** mutes and unmutes sound output.

## FUNCTION SETUP

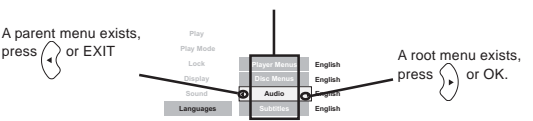
Proper setup of the unit will let you enjoy better sound and picture quality as well as many useful features. The selections are the preferred options that will be chosen, provided they are available on the disc. **NOTE: If the disc loaded does not have the preferred option then the disc's own preference should be used.**

### BASIC OPERATIONS

To access the setup menu the unit must be in **STOP** mode.



Use the Active Navigation keys to browse and make selections in the menus. To make selections within a menu, press **◀▶** and then OK.



**PLAY**  
Play  
No menu is available without disc loaded. (See under "When Disc is stopped")

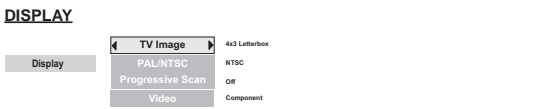
**PLAY MODE**  
Play Mode  
No menu available without disc loaded. (See under "When Disc is stopped")

**LOCK**  
Lock  
Change Password  
Rated Titles

**Lock Player**  
Create your password here using the numeric keys. The player is delivered without a password. When you set the rating limits (see under "Rated Titles") for the first time, you are required to enter your own password (e.g. 1,2,3,4). This becomes the password for the unit. **You must memorize this password in order to change it in future.**

**Change Password**  
Change your existing password to a new one using the numeric keys to replace the existing one.

**Rated Titles**  
DVD discs have parental levels assigned to them. The range of parental controls are from 1 to 8. The player can be set in a similar way by pressing **◀▶**. If the unit's rating limit is set to 8, it will play all discs. If the player's rating limit is set below 8, only discs with a lower or equal parental level will play. For example if the player is set to 5, only discs with parental control ratings of 5,4,3,2 & 1 will play. To play a higher rated disc you must change the unit's rating to a higher number.



**TV Image**  
Three options available: 1) 4x3 Letter Box, 2) 4x3 Standard & 3) 16x9 Wide Screen. Press OK to select a suitable one.  
Select TV Image according to your TV type.

**If you have a wide-screen (16:9) TV, select "16x9 Widescreen"**  
- for 16:9 movie, you will have full screen viewing.  
- for 4:3 movie, black bars show on left and right sides of screen.  
**For conventional 4:3 TV,**  
- if you select 4x3 Letter Box for 16:9 movie, black bars show on top and bottom of screen.  
- if you select 4x3 Standard for 16:9 movie, left and right edges of the screen are hidden.  
- if you select either 4x3 Letter Box or 4x3 Standard for 4:3 movie, you will have full screen viewing.

**PAL/NTSC**  
Press OK to select between PAL or NTSC output to match your TV or other equipment.

**Progressive Scan**  
By displaying all the lines of a picture simultaneous (instead of displaying odd and even lines alternatively such as a conventional TV), Progressive Scan greatly enhances picture resolution while minimizing distortion and flickering. **To use this feature, your TV must be Progressive Scan compatible with Component Video input jacks connected to the DVD unit.**

1. To set it to NTSC unless this function only works when system is in PAL.
  2. Select the Progressive Scan option and press OK (or V.Select on the remote control) to activate.
  3. A caution message will display. Press OK to continue.
- Caution:** If you see *distorted or no picture after OK is pressed, then check the following:*
- Your TV may not be Progressive Scan compatible. Wait a few seconds and the unit will return to the previous setting before change.*
  - Make sure your TV is connected with Component Video output from the DVD unit and is now switched to view such input through which Progressive Scan signals are transmitted. There will be no video signal from AV output, in case you have both Component Video and AV connections.*

4. A message requesting for confirmation will appear on screen. Select Yes (confirm) or No (return to previous setting) by **◀▶** and press OK to confirm.

**Video**  
Press OK to select between Component Output and S-Video Output to match the video output of your DVD unit.

**DRC**  
Press OK to turn on/off. This controls the Dynamic Range Compression (DRC) for night time listening. DRC reduces the difference between normal voices and sounds like explosion to avoid waking your neighbours. The amount of range control available depends on the disc.

**Digital Output**  
Press OK to check the box if you have connected the unit's digital audio output to a receiver with Dolby Digital or DTS.

**Speaker Setup**  
Two options are available to adjust your speakers setting to best fit your listening environment.

**Distance**  
You can specify the distance (changing the sound delay) between speakers (front, center and surround speakers) and the listener for optimal stereo sound. The default distance is 10 feet for front and center speakers and 5 feet for surround speakers. Change the distance from 1 to 30 feet according to your actual listening environment by pressing **◀▶** and then OK.

**Volume**  
You can make fine adjustment to the loudness of each speaker from -10 to +10 dB. When this option is selected, a test noise will generate automatically from each speaker, one by one. To go to the next speaker manually, press **◀▶**.

Adjust loudness by pressing **◀▶** and press OK to confirm setting and exit the menu.

**Pro Logic II Mode**  
The additional flexibility of Pro Logic II allows it to be tailored for specific applications. Five standard modes are available:

- It offers users the robust surround processing of the original Pro Logic.
- It's usually used when Pro Logic II is connected to a virtual process for speaker use.
- It's recommended as the standard mode for autostand music systems (without video), and is optional for A/V systems.
- It can be called simply "Pro Logic II". It has stereo surround channels and no surround filter, unlike Pro Logic which has a mono surround channels and a 7KHz surround filter. Movie mode is the standard required for all A/V systems.
- It's the same as the Music mode except that the directional enhancement logic is turned off. It may be used to enhance mono signals by making them seem "larger".

**Pro Logic II Control**  
PL II Control lets you to customize the Pro Logic II Music Mode Sound Effect. The option is available only when the player is in Music Mode.

**Dolby Digital Surround**  
A simple control that alters the ratio of L+R to L-R for the two-channel input signals. It allows the user to gradually adjust the soundfield either towards the front or towards the rear. If a recording is too spacious or strong from the surrounds, it can be adjusted "forward" to get a better balance.

**Dolby Pro Logic II Surround**  
The Dolby Pro Logic II Surround system is the next generation in Dolby Surround decoding. It creates five full-bandwidth output channels from two-channel sources.

**3 Stereo**  
3 Stereo produces three channels (front left, center, front right) of sound from a two channel analog signal. It is not a surround format so it does not require surround speakers.

**Soundfield Effects**  
The digital Soundfield Effects recreate the effects of sound reflected from walls or ceilings to obtain the sound presence of real environments.  
- Stadium: recreates a large stadium using very long reverberation times.  
- Stage: recreates a stage environment, emphasizing sound from the front speakers.  
- Hall: recreates a hall using lots of reflections. Suitable for orchestral music such as classical and opera.  
- Disco: recreates the disco or club music effect. It is suitable for all types of music that are played in a disco.  
- Live: suitable for all types of music.

**LANGUAGES**  
Press OK to select among the 7 languages as default language for player menus. Press OK to confirm selection.



**Player Menu**  
Select among the 7 languages as default language for player menus. Press OK to confirm selection.

**Disc Menu**  
Select among the 7 languages (if available on disc) as default language for disc menus. Press OK to confirm selection.

**Audio**  
Select among the 7 languages (if available on disc) as the default audio language. Press OK to confirm selection.

**Subtitle**  
Select among the 7 languages (if available on disc) as the default subtitle language. Press OK to confirm selection.

## GENERAL OPERATION

**Selecting the source**  
Press one of the input selector buttons (on the front panel or remote control) to select the below input source:  
- AV SEL (press FUNC. on front panel or AV SEL on remote control)

**TUNER**  
Press TUNER to select tuner mode, the display will change to show the current band and frequency.

**DVD/CD/VCD**  
Press DVD/CD/VCD to select the desired track or chapter.

**Adjusting the Master Volume**  
The master volume adjusts all channels at the same time: Press **▲/▼** on the remote control, OR rotate the master volume knob on the front panel.

**Muting the Sound**  
Press MUTE to mute the speaker output. The Speaker Indicator will disappear on the display and the MUTE icon appears. Press MUTE or the volume button on the remote or volume knob on the front panel to restore the speakers output.

**Selecting Surround Output Modes**  
The number of output modes vary according to the system setup and the input sources. Press SURROUND repeatedly on the remote control to select the different surround modes as shown below:

- Dolby Pro Logic II Surround  
- 3 Stereo  
- Stereo  
- Digital Soundfield Simulation - Stadium  
- Stage  
- Hall  
- Disco  
- Live

**Storing Preset Stations**  
The unit can store up to 20 stations in the FM and AM wavebands respectively.

1. In tuner mode, press TUNER to switch between AM and FM band.  
2. Press **◀▶** to tune in the desired station.

3. Press and hold OK until the preset channel icon flashes.

4. Press **◀▶** or use the remote's numeric keys to select the preset channel number.

5. Press OK once more to store into memory when "SAVED" icon flashes.

**SLEEP**  
Setting the Sleep Timer  
This feature allows you to select a time for the system to switch to the Standby mode automatically.

1. Press SLEEP on the remote control repeatedly to cycle through the below sleep timer options.  
The available options are:  
SLEEP OFF -> SLEEP 120 -> SLEEP 90 -> SLEEP 60 -> SLEEP 30 -> SLEEP 15

2. The "SLEEP" icon will appear when the desired Sleep time is set on.

**Checking remaining Sleep Time**  
When the Sleep timer is switched on, you can check the remaining time before the unit switches to Standby mode. Press SLEEP once, the remaining time will be displayed.

**Cancelling the Sleep Timer**  
To switch off the Sleep Timer, press SLEEP repeatedly until "SLEEP OFF" is displayed.

**SURROUND SOUND & SOUND EFFECTS**  
Display Indicators  
Dolby Digital Indicator  
Dolby Pro Logic II Indicator  
Speaker Indicator

**Note:** For proper surround sound make sure you have followed the setup and installation procedure fully.

## PLAYING DVD/CD/VCDs

1. To play DVD/CD/VCD discs, press **▶** to open the disc tray.
2. Load disc onto the tray with label side facing upward.
3. Press **▶** to close the tray. The disc will start playing automatically. There may be a short delay before playing while the player reads the menu from the disc.

## WHEN DVD/CD/VCD DISC IS PLAYING

**Pause, Slow Motion and Frame-by-Frame Advance for DVD/CD Playing**  
Press **II** to freeze playing temporarily. Press repeatedly to select between "Pause" and "Freeze" modes. In the "Pause" mode, press **◀▶** to start forward/backward slow motion play (increase or decrease speed by pressing **◀▶** repeatedly). In "Freeze" mode, each press of **◀▶** will move the play forward/backward by one frame. Press **▶** to resume normal playing.

**Fast Search**  
Press **◀▶** to search through the disc forward or backward quickly. Pressing **◀▶** will increase/decrease the search speed. (Note: there is no sound in Fast Search, Slow Motion and Frame-by-frame Advance modes. Press **▶** to resume normal playing.)

**Quick keys (MENU, TITLE) for DVD Playing**  
Press corresponding keys to go into their respective disc menu. Select options in menus with navigation keys and confirm selection by pressing OK.

**Stop and Resume stop**  
Press **■** once to resume stop. In this mode playing can be resumed from the stop point by pressing **▶**. Press **■** twice to stop playing completely and press **▶** will start playing from the beginning.

**Numeric keys (0-9) for CD Playing**  
Input track number for direct track selection.

**Active Navigation**  
Press INFO to display the control bar on TV screen to make menu selections without interrupting playing. Select options by pressing **◀▶**. Press INFO or EXIT to quit from showing the control bar.

**For DVD Discs:**  
Press **▶** to start playing. Press **▲/▼** to select the desired track or chapter. Press **▶** to start playing. Press **▶** to start playing from the beginning.

**For CD Discs:**  
Press **▶** to start playing. Press **▲/▼** to select the desired track. Press **▶** to start playing from the beginning.

**For VCD Discs:**  
Press **▶** to start playing. Press **▲/▼** to select the desired track. Press **▶** to start playing from the beginning.

**For DVD playing, input the desired time you want to play from, by using the numeric key. Associated scene will be played on screen. Display the CD/VCD current track time.**

**T: 01**  
Press **◀▶** to select the title/track you want to play.

**C: 12**  
Press **◀▶** to select the chapter of DVD you want to play.

**Normal, Enhanced or Maximum**  
Press **◀▶** to select the screen fit option [Normal, Enhanced or Maximum] according to the availability on disc.

**Subtitle language**  
Press **◀▶** to select subtitle language according to the availability on disc.

**Audio output mode**  
Press **◀▶** to select audio output mode according to the availability on disc.

**Play mode**  
Press **◀▶** repeatedly to select play mode and repeat mode as below:  
Standard > Program > Random > Disc Repeat > Title Repeat > Chapter Repeat > Repeat A-B

**For CD disc:**  
Standard > Program > Random > Disc Repeat > Track Repeat > Repeat A-B > IntroScan

**For VCD disc:**  
Standard > Disc Repeat > Track Repeat > Repeat A-B  
Press OK to confirm.

**Note:** Repeat A-B allows a passage to be repeated continuously. Press OK at the start of the required passage (A), then press OK again at the end of the required passage (B). The passage will then be repeated continuously between point A and B.

**PBC**  
Press **◀▶** to select between PBC (Playback Control) on/off. The PBC menu consists of a list of titles, you can select a title directly with numeric keys. (Some discs may not have this function)

**Index mode**  
Press OK to enter Index mode and index menu will be displayed on top of screen. Press OK during playing to set any scene as indexed.

**Play/cancel indexes**  
To play/cancel indexes, use the Active Navigation keys to select **▶** (Play) or **✕** (Cancel) in an index and press OK.

**00:33:10 T01**  
Unmarked  
00:50:01 T02  
Unmarked  
Unmarked

**MP3 files along with JPEG files or JPEG files only:**  
PLAY  
00:15:20 My favorite song  
00:15:20 My best picture  
MP3 Play Mode: Standard

**00:15:20**  
Timer  
Display the discs current playback time.

**SSS**  
Slideshow Speed Selection  
Press **◀▶** to select a slideshow speed: Fast > Slow > Normal

**MPEG4 files only:**  
PLAY  
00:15:20 My Movie Name  
MPEG4 Play Mode: Standard

**00:15:20**  
Timer  
Display the discs current playback time.

**Subtitle Selection**  
Press **◀▶** to select subtitle language according to the availability on disc.

**Audio Output Selection**  
Press **◀▶** to select audio output mode according to the availability on disc.

**Play Mode Selection**  
Press **◀▶** repeatedly to select play mode and repeat mode as below:  
Standard > Program > Random > Repeat A-B > Folder Repeat > Disc Repeat > Track Repeat

## PLAYING MP3 / WMA / JPEG / MPEG4 Disc

1. To play MP3/WMA/JPEG/MPEG4 disc, press **▶** to open the disc tray.
2. Load disc onto the tray with label side facing upward.
3. Press **▶** to close the tray, then the files on disc will be detected.

## SELECTION MENU

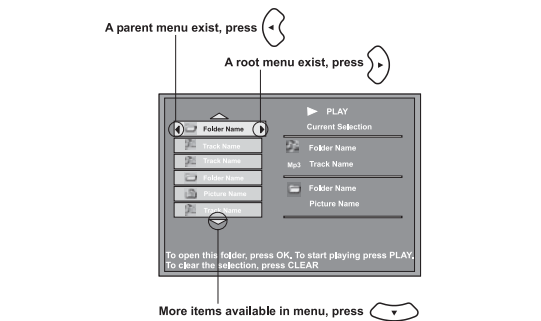
The Selection Menu will appear when starting the MP3/WMA/JPEG/MPEG4 or MP3-JPEG playback. Use active navigation keys to access the files. Press OK to select. The names of the selected folders and files will appear in the Menu. To start playback of the chosen files, press PLAY.

**MP3/WMA files only:**  
The player begins playing all the files in the currently selected folder and followed by all the files in the subfolders contained within its parent folder. After that, the player plays the remaining folders in the disc.

**JPEG files only:**  
The player starts the slideshow with the JPEG files currently selected and proceeds to display all the JPEG files in the same folder. It then goes onto the JPEG files in the subfolders contained in the same folder.

**MP3 files along with JPEG files:**  
The player begins the slideshow with the JPEG files in the currently selected folder. At the same time, it plays the selected MP3 file.

**Note:** If you haven't confirmed a selection, the player will automatically play the first 10 seconds of the track you select. No PLAY indicator will appear. IntroScan playback will not skip to next file automatically.



## WHEN DISC IS PLAYING

**Pause**  
Press **II** to stop playing temporarily. Press again to resume playing.

**Skip**  
Press **◀▶** to skip forward or backward a track.

**Stop and Resume Stop**  
Press **■** once to Resume Stop. In this mode playing can be resumed from the stop point by pressing **▶**. Press **■** twice to stop playing completely and press **▶** will start playing from the beginning.

**Quick keys (ROTATE, MENU, ZOOM)**  
Press corresponding keys to go into respective disc menu. Select options in menus with navigation keys and confirm selection by pressing OK. Each press of ROTATE will rotate the picture by 90 degrees. Press MENU during picture mode or picture only playback to display the picture/music selection menu, while playback stops. Press ZOOM to zoom the picture in and out during a picture slideshow.

**Active Navigation**  
Press INFO to display the info bar on TV screen to make menu selections without interrupting the playing.

**MP3 / WMA files only:**  
PLAY  
00:15:20 My favorite song  
00:15:20 My best picture  
MP3 Play Mode: Standard

**00:15:20**  
Timer  
Display the discs current playback time.

**Play Mode Selection**  
Press **◀▶** repeatedly to select play mode and repeat mode as below:  
Standard > Program > Random > Track Repeat > Folder Repeat > Disc Repeat > Repeat A-B  
Press OK to confirm.

**MP3 files along with JPEG files or JPEG files only:**  
PLAY  
00:15:20 My favorite song  
00:15:20 My best picture  
MP3 Play Mode: Standard

**00:15:20**  
Timer  
Display the discs current playback time.

**SSS**  
Slideshow Speed Selection  
Press **◀▶** to select a slideshow speed: Fast > Slow > Normal

**MPEG4 files only:**  
PLAY  
00:15:20 My Movie Name  
MPEG4 Play Mode: Standard

**00:15:20**  
Timer  
Display the discs current playback time.

**Subtitle Selection**  
Press **◀▶** to select subtitle language according to the availability on disc.

**Audio Output Selection**  
Press **◀▶** to select audio output mode according to the availability on disc.

**Play Mode Selection**  
Press **◀▶** repeatedly to select play mode and repeat mode as below:  
Standard > Program > Random > Repeat A-B > Folder Repeat > Disc Repeat > Track Repeat

**00:15:20**  
Timer  
Display the discs current playback time.

**Subtitle Selection**  
Press **◀▶** to select subtitle language according to the availability on disc.

**Audio Output Selection**  
Press **◀▶** to select audio output mode according to the availability on disc.

**Play Mode Selection**  
Press **◀▶** repeatedly to select play mode and repeat mode as below:  
Standard > Program > Random > Repeat A-B > Folder Repeat > Disc Repeat > Track Repeat

**Note:** When the selection is completed, exit the Navigation Bar by pressing INFO, or EXIT.